

# PROSPECTUS

Newham London



## PARENT QUOTE

"Our experience with the nursery is excellent. Our child loves it there. She is having fun, making friends and learning a lot. We have a great relationship with all the staff."

# OUR OFFER

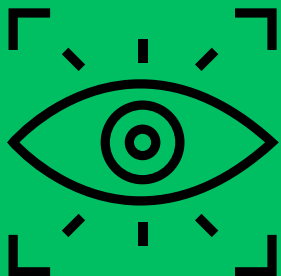
We offer places (including the 30 hours) for eligible funded two, three and four year olds and provide paid wrap around childcare outside of these hours. The school operates under the regular school terms, however the child care provision is available all year round.

*"Oasis  
OF CALM"*



## VISION AND ETHOS

Preparing children for Reception is not a task we can do alone. It is essential that we work in partnership with parents/carers and the various health, educational and statutory services within our community to ensure that children achieve their best and make excellent progress. We are in a unique position to be offering nursery education and children centre services from the one site and it is this partnership working that leads us to believe that we are "forging forces to give children the best start in life." All our children will have the right to an outstanding nursery education irrespective of social, economic or demographic factors. Rebecca Cheetham children will be given opportunities to be curious, creative, empathetic and caring.



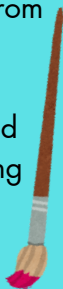
We will provide them with a wide range of experiences to ensure they are exposed to a broad and balanced curriculum. We will support parents/carers to give them the best advice on how to help their child make good progress through experiences and inquisitive play and utilise them as the first educators of their children in order to inform our own assessments.

# CURRICULUM



At Rebecca Cheetham Nursery, we offer a broad and balanced curriculum designed to provide children with a wide range of meaningful learning experiences. High-quality books form the foundation of our approach, and children are given the time to engage deeply with each text. This fosters a strong love of books and reading from an early age.

Our curriculum is typically structured around a half-termly theme, allowing us to explore ideas in depth. This approach supports children in consolidating their understanding through child-initiated play, making learning both enjoyable and impactful.



**TAP**  
**TAP**  
**TAP**

We have developed nine progressive Learning Aspirations—key areas where we aim to support children in developing essential skills during their time with us. At the heart of these aspirations is Communication and Language. Our staff have received extensive training in supporting children's communication development.

We draw on a range of respected Early Years educational frameworks to inform our practice and ensure that our curriculum aligns with national standards and best practices across other Early Years settings. Our early years curriculum is not prescriptive or fixed; it evolves with the children and is responsive to their interests. While we value and incorporate children's interests, our curriculum is intentionally designed to expose them to new ideas and experiences that broaden their understanding and nurture their curiosity.



Throughout the year, we work in partnership with parents to offer guidance and support on how they can help foster their child's development at home. This collaboration helps to further build children's knowledge and skills in a fun, meaningful, and holistic way.

“...children grow as confident learners and prosper here.” - OFSTED

# ENRICHMENT



At Rebecca Cheetham Nursery, we offer an ambitious extra-curricular programme that actively involves parents and carers to provide children with enriching, first-hand experiences. These opportunities help children deepen their understanding and embed new ideas in meaningful ways.

Our children enjoy visits to a variety of places, including farms, places of worship, the seaside, and local libraries. We also bring experiences into the nursery, such as live theatre, cycling instructors and hatching chick eggs.



## KEY PERSON

We operate a key person system in which each child is assigned a dedicated member of staff. This key person is responsible for supporting your child's development and carrying out any assessments during their time with us.

Forming a strong, secure attachment with their key person helps children feel safe and confident, which in turn supports them in building positive relationships with other children in the setting.

Your child's key person will also be your main point of contact regarding their progress, offering regular updates and working in partnership with you to support their learning and well-being.

## WHAT NEXT?

Come in for a tour to see first hand what Rebecca Cheetham Nursery School has to offer. **Register online** on our website (Waiting List Application).

If you haven't already, why not come and join one of our **Children's Centre** sessions; they're free and will give you a great opportunity to meet other parents, get helpful advice and enjoy a safe, nurturing space with your child.

## Rebecca Cheetham Nursery School and Children's Centre

Marcus Street | Stratford | E15 3JT

Phone: **0208 534 3136**

[www.rebeccacheetham.newham.sch.uk](http://www.rebeccacheetham.newham.sch.uk)

